



This community newsletter is sent out monthly on behalf of tawalink.com, Tawa's community website since 2002.

Other sources of online community information in Tawa:

www.neighbourly.co.nz • www.facebook.com/VibrantTawa • www.facebook.com/tawacommunityboard

TAWA PRIMARY SCHOOLS' CITIZENSHIP AWARDS

The Tawa Primary Schools' Citizenship Awards ceremony took place recently at the Tawa Community Centre. This is the seventh year of the awards in Tawa.

All six local primary schools plus the intermediate were represented, with six Year 6 students and three Year 8 students being presented with awards by the Mayor of Wellington for displaying "true leadership, citizenship, contribution to school life, etc". The presenters were Cr Malcolm Sparrow and Tawa Community Board chair Richard Herbert, with assistance from Crs Jill Day and Peter Gilberd.



The awards are sponsored by the Tawa Community Board, and the book vouchers by Take Note Tawa.

The ceremony was attended by most of the principals, class teachers, and whanau members of the winning students, and included short speeches by Mayor Justin Lester and Tawa Borough Scholarship winner, Tawa College Year 13 student Chinmaya Dixit.



Well done to all of this year's winning students: Hermione Rose (Greenacres School), Agustina Mazur (Hampton Hill School), Fefiloi Hingano (Linden School), Toby Tomkies (Redwood School), Saoirse Hopper (St Francis Xavier School), Camryn Collins (Tawa School – Yr 6), Timera Ngeth (Tawa School – Yr 8), Hunter Kahu (Tawa Intermediate Yr 8 boy winner), Zoe Hollier (Tawa Intermediate Yr 8 girl winner).



NEIGHBOURS' DAY IN TAWA

In March 2018 we'll again be making a big weekend of "Neighbours' Day Aotearoa" in Tawa. The aim is to have lots of streets getting together with their neighbours any weekend that month – maybe just having fish & chips together, sharing brunch, or rolling out a few barbecues to cook and eat together.

A worthwhile event and a great way to meet those who live nearby.



TAWA LIONS CHRISTMAS PARADE

Thanks to everyone involved in another superb Tawa Christmas Parade, with a substantial number of participants and an impressive turnout to watch them all go by. It was great to see all the community groups taking part, dancing schools, the MG club (who are there year after year), all sorts of characters including local city councillors and, of course, the jolly fellow in the red suit on the last float.

Thanks to the Lions Club of Tawa for organising this special end-of year event once again.



TAWA CHRISTMAS FESTIVAL

The Christmas Parade was followed by the first-ever Tawa Christmas Festival at Tawa School with live entertainment, food, Christmas Carols and Santa. Thanks to the Tawa School Home and School Committee and Tawa Residents' Association for organising the event, and it was great to see so many people along to enjoy it!



TAWA COLLEGE SERVICE IN THE COMMUNITY

It was last week when around 250 Year 10 Tawa College students undertook their annual four days of community service in Tawa, as has happened these past nine years as the school year draws to a close. It's all about assisting local seniors, or those "less able", with essential work that might otherwise not get done.

They pull weeds, clean windows, clear scrub, wash cars, paint fences and so on. It is a great community initiative, with teenagers getting to use garden tools and other implements they've quite possibly never before handled in their lives! And it's a win-win in that youngsters get to connect with older people they've never previously met, and the old folks see the teenagers having fun whilst providing a useful helping hand which is much appreciated by the Tawa community.

Year 10 students spent four days last week on "Outdoor Education" – working in the community one day, and on the other days kayaking and biking at Eastbourne, paintball and H2O Extreme in the Hutt, and walking up Mt Kaukau followed by a swim at the Khandallah Pool.



Tawa resident Barbara Adams appreciates the helping hand each year. L to R: Tim, Thomas, teacher Rekekah Genet, Barbara, Aidan, Marvin.

MAINTAINING OUR HANGING BASKETS

In the November newsletter supplement, the call was made for feedback on whether local people considered it was worth paying \$1500 every six months to retain our hanging baskets in the central shopping area. In response exactly 50 emails came through to me [the Ed.], 47 supportive, 2 not supportive, and 1 neutral.

Here are some of the comments received:

"I feel strongly that we keep them. Why on earth would we discard them? They are decorative and they help make our built-up area more attractive!"

"They brighten up the shop frontages and are well worth the cost of maintaining them."

"Tawa needs to have a "point of difference" from other places. They add to the village atmosphere."

"It's not all about money but making and keeping the Tawa Main Road shopping centre an attractive place to shop"

If funding becomes a problem, several people offered to sponsor a basket (at a cost of \$60 for a year).

A "working group" is currently being set up to take on responsibility for maintaining the baskets and ensuring funding in the future.

The photo shows the team from Rotary Tawa and others who hung up the new baskets last week. They are replaced every six months. This latest round of baskets has been paid for by the Tawa Community Board, but future funding is very much up in the air (pun unavoidable).



Hanging team: Richard Herbert, Gaylene Lines, Paul Drummond, Robert Tredger, Malcolm Andrews, Doug Burrus, Fiona Wild and Elizabeth Sutton.

4000L WATER TANK DONATED TO LINDEN SCHOOL

The Tank Guy, the manufacturer of emergency water tanks, delivered a 4000L water tank to Linden School recently. This was the 'reward' for Cr Malcolm Sparrow and fellow councillors Jill Day and Peter Gilberd having reached a target of selling 240 x 200L emergency water tanks between March and August 2017.

Any community group, school or similar which takes on board the selling of 200L emergency tanks will qualify for a free 4000L water tank from The Tank Guy once they've sold 240.

The councillors have been selling them outside supermarkets in the Northern Ward, including Tawa New World, from time to time. Malcolm has also been selling them from his home address in Tawa. More than 650 have been sold since earlier last year.

Linden School principal Gaylene Hill says the school will use the large tank to water their greenhouse where teachers and pupils grow zucchinis, tomatoes, broccoli, eggplants, spinach and more.

"The water tank will help to teach the kids about sustainability and about the amazing things that nature provides," Gaylene says. "It will also strengthen the school's resilience and provide water in case of an emergency."

Malcolm says that \$10 profit is made from every tank sold and around \$2500 has been donated to date to various charities and groups including Linden School, Tawa School, Johnsonville Plunket, Free for All, Paparangi Scouts, etc.



Malcolm Sparrow, Gaylene Hill (principal), Jill Day and Peter Gilberd in front of the new water tank at Linden School.

TAWA COMMUNITY GRANTS

The Tawa Community Board has \$15,000 each year to be made available to worthy local causes. The Tawa Community Grants Fund is designed to assist voluntary projects in Tawa.

Grants may be made for charitable, educational, welfare, community development, cultural, recreational, sporting, activity development, equipment or training programmes. Applications close 28 February 2018.

To be eligible, applicants must:

- show that their project benefits residents of Tawa
- not have excess unallocated reserve funds

Preference will be given to projects that will be completed within 12 months.

For further details, see <https://wellington.govt.nz/services/community-and-culture/funding/council-funds/tawa-community-grants> or call the WCC grants team on 803 8525.



Tawa Community Centre Christmas Morning Tea

Wednesday December 13 at 10am

It's getting to that time of year again, and so we thought it would be nice to celebrate with a community morning tea.

All welcome, so please make sure you come along.

NEW TAWA TOWN CENTRE UPGRADE WORKS UPDATE

– by Amy Hobbs, Senior Urban Designer, Wellington City Council

Pedestrian crossing upgrades

Construction will begin on upgrading two pedestrian crossings on [the] Main Road in early February 2018 – adjacent to Tawa Take Note and adjacent to the Tawa Plaza area. This work will improve safety for both pedestrians and vehicles and improve the amenity of the streetscape. The crossings will be wider and more generous for pedestrians, making connections across [the] Main Road easier.



Construction of the crossings will take approximately three weeks. They will both be upgraded at the same time, closing one lane of traffic at a time to reduce disruption. Diversions and traffic management will be in place.

Plaza upgrade

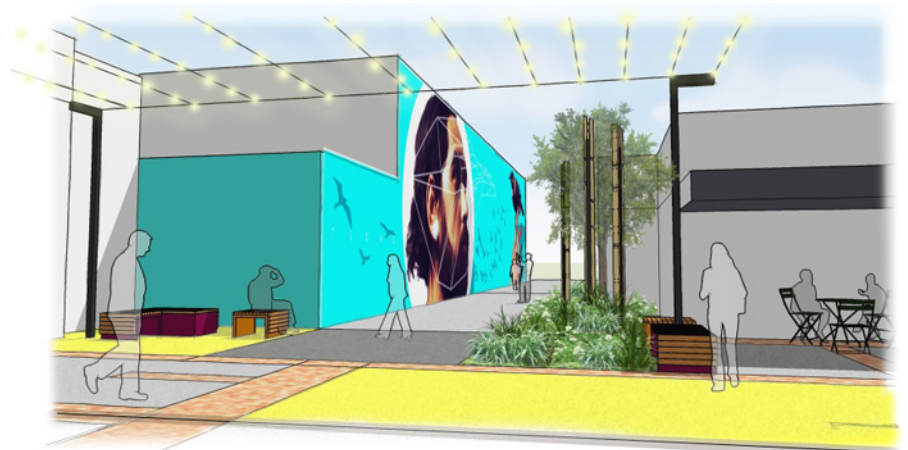
Due diligence and feasibility for construction of the plaza has been completed including surveying, identifying underground service locations, geotechnical testing and installation of a new underground distribution unit for street lighting. A notice of intent to tender for a Main Construction Contractor was



issued on GETs in August 2017 and a list of interested contractors has been documented from that process. To avoid disruption to local business in the lead-up to Christmas, construction of the plaza works will take place following the pedestrian crossing works.

Council will stage the works to minimise disruption to local businesses as well as pedestrian and traffic flow, consequently the pedestrian crossing works will be completed before work on the plaza commences. The plaza upgrade works include new architectural lighting, new and larger garden beds, fun and colourful seating and a flexible use space that can be used for markets and events.

Council officers will undertake another walk around businesses in the new year and will provide an update on the programme and construction methodology once a Main Contractor is appointed.



Also please keep an eye on the Tawa Town Centre Upgrade project page where we will be posting updates: <https://wellington.govt.nz/your-council/projects/tawa-town-centre-improvement-project>

TOOTING FOR TUCKER LAST WEEK

“Toot for Tucker” in Tawa has been run by the Tawa Rotary Club since 2011. It takes place early each December with assistance from the local Lions Club, Scouts, and Salvation Army, as well as Tawa Volunteer Fire Brigade members operating the fire appliances.

This year saw around 110 helpers (including 45 scouts/cubs) heading off in four separate groups on Tuesday night to different parts of western and central Tawa to collect non-perishable food and donations for the Tawa Salvation Army foodbank. The exercise was repeated “east of the tracks” on Thursday night with 50-60 taking part.

It’s a lot of fun with the fire engine siren going, car horns tooting, air horns making a din, and numerous kids blowing whistles and yahooing.

Thanks to all who participated and to all those who contributed in any way. Several thousand items (they’re still being counted) were collected for the foodbank, plus \$824 in cash donations. It is a great community initiative and one which adds to the “neighbourly spirit” of Tawa!



LINDEN SCHOOL'S CERAMIC MURAL

Linden School's Pottery Club has held exhibitions this year at a local café and in a pop-up gallery, and alongside the Garden Club and the Sewing Club at Tawa's Mervyn Kemp Library.

The focus in term 4 was a ceramic mural for which all year 6 students designed and made a tile on the theme of “trees that remind me of home”. They were ably supported by their teacher, Bex Dabbs.

For pupils, the project brought together [their school's] performance virtues of confidence and competence in shaping and joining clay. The tiles were their leaving gift to the school, for future students (perhaps one day their own children) to enjoy.

Coconut palms, kowhai, pohutakawa and koru were popular, with leaves and twigs cleverly worked into elements of national flags. A big hairy spider enlivens the scenery. Creativity is evident in all of the tiles.



PINE TREES AND POLLEN

A Tawa resident has expressed concern about the planting of pine trees around Tawa, and the pollen and hay fever that results.

We have received the following response from Council's Team Manager Arboriculture:

..... contd

contd

"Thank you for your enquiry about pine tree planting in Tawa and how this affects residents' asthma.

Council do very rarely plant pine trees on public property around Tawa, with the exception of individual specimen trees in reserves which is still infrequent. We also have no control over what is planted on private property and there are some privately-owned forestry blocks surrounding Tawa that may be replanted post-harvest.

Trees are often seen as a primary cause of hay fever and asthma, and Council receive a lot of requests at this time of year to incorrectly remove trees as the cause. There are numerous causes of asthma and hay fever that are both physiological and environmental. In this instance pine trees flower between July and September, so it unlikely that these are the primary source of residents' respiratory issues.

I have included two useful links, one from the Asthma Respiratory Foundation that highlight triggers including trees, and a recent article from the 'Telegraph' about research showing tree-lined streets can help prevent serious asthma attacks.

<https://www.asthmafoundation.org.nz/your-health/living-with-asthma/common-asthma-triggers>

<http://www.telegraph.co.uk/science/2017/11/17/line-streets-trees-prevent-serious-asthma-attacks-say-scientists/> "

BAN ON SPRINKLERS AND IRRIGATION SYSTEMS



Total ban on sprinklers and irrigation systems.



Careful watering by hand is still permitted.

For more information visit,
wellingtonwater.co.nz
or contact your local city council:
Hutt City Council, 570 6666
Upper Hutt City Council, 527 2169
Porirua City Council, 237 5089
Wellington City Council, 499 4444

 **Wellington Water**

Our water, our future

The Lego Lady & friends present: Tawa Brickshow

Saturday 27th January 2018
10am – 3pm



20 tables of exhibits: Large playpit : Games
Gold coin entry / under 3's free

Emmaus Centre, St Christopher's
Corner Main Road & Lyndhurst Road, Tawa

Fundraising for Prison Fellowship

With thanks for the support of -



PATHWAY CLOSURE

Please note the notice below refers to the pathway between Kenepuru Station and Porirua. The Tawa Valley Pathway – Ara Tawa remains open.

Te Ara Tawa Temporary pathway closure

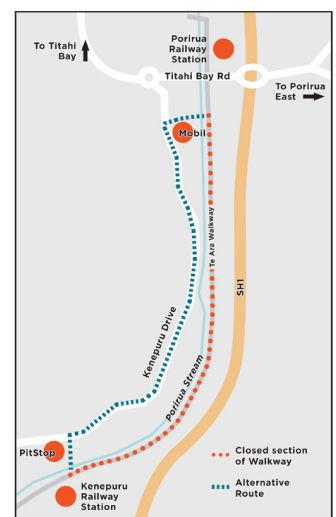
The pathway will be closed until the end of 2017 to allow for construction works on the bridges for the Kenepuru Link to the new Transmission Gully motorway.

We will be using cranes to lift materials over the Te Ara Tawa pathway and for safety reasons this section of the path will need to remain closed until we complete this part of our works.

Please use the alternative route shown on the map. We apologise for any inconvenience and thank you for your patience during this phase of work.

For more information about the Transmission Gully motorway please visit our website - www.tg.co.nz

If you have any questions or comments please contact us on **0800 TG INFO** (0800 84 4636) or info@tg.co.nz



2 MINUTES WITH Steph Knight

Steph is another enthusiastic member of the revitalised Tawa Residents' Association (under the Vibrant Tawa umbrella).

She was part of the group whose role was to come up with a new "brand identity" (logo) for Tawa, as featured on the front page of last month's newsletter.

Steph has been the driving force in seeing the Tawa Pump Track (bike park) in Duncan St overhauled in a relatively short period of time. Her wish list also includes an upgrade of the Tawa Skate Park, south of Tawa Pool. That may take a little longer to achieve! And then it will be on to the next project for this "driven individual" who likes to get things done in the Tawa community!



Where were you born? I was born on the 'mainland' in Blenheim.

Where did you grow up?

My two sisters and I lived with our parents in the same house in Blenheim until I was 16, when we moved about three blocks up the same road. Blenheim was a great place to grow up!

Where were you educated?

I went to Marlborough Girls' College in Blenheim, before making the big move to Christchurch to go to Canterbury University to do a BA, followed by further study at Christchurch Polytechnic in Marketing and Business Management. I have also done a Certificate in Event Management at City University in London and a Diploma in Interior Design through the Interior Design Institute here in New Zealand. Next on my list is something to do with Human Behaviour.

How long have you lived in Tawa?

My husband Darren and I moved to Wellington after meeting in the UK – we moved to Tawa in 2010 after six years in Newlands.

What about family?

Darren and I have two children – Eliot who is 11 and Lucy who is 9, both at great schools here in Tawa.

Work experience over the years

I was lucky enough to travel for around five years after studying, and that started with two years nannying in Michigan, USA. I lived with an incredibly wealthy family and we flew on a private jet, skied in Aspen, holidayed in the Bahamas and in their house in Florida. I definitely experienced what it was like to live the(ir) high life!

When we returned to New Zealand I worked as an EA and Project Coordinator at Wellington City Council before taking a break to have children. I have run my own decluttering/home organising business "Less Mess" for the past six years or so – it's a great way to help people de-stress and enjoy their homes more!

What are your interests and hobbies?

Yoga is my number one hobby/passion. I've practised for about 16-17 years now. I love to be creative and I think there is a painter in me somewhere, but I haven't yet had the opportunity to let her out.

My other big interest is being involved in the community and meeting all the incredible people we have around us!

Favourite sports team and/or sports person?

Oh I'd have to say my daughter's junior netball team and my son's Tawa Rugby team, and also the Silver Ferns.

..... contd

contd

Favourite musical group and/or individual singer?

My favourite band of all time is U2. I grew up listening to them and so many of their songs have strong memories for me. Plus I love Ed Sheeran, and Pink – both of which I'm going to see next year!

What is your favourite holiday destination in New Zealand?

So many to choose from! Queenstown was a favourite last year, and the far North earlier this year, but to be honest there's nothing quite like going back to Blenheim. It's so relaxing!

What accomplishments/achievements in your life give you the most satisfaction/pride?

I'd like to say winning Lotto, but that hasn't happened yet, so probably seeing our gorgeous children growing up into lovely humans, having incredible life-long friends, and running a business that I love.

What are three things you would like to do before you die?

Hmmmm I'm really lucky to have already done so much – I've travelled, skydived, bungee jumped, scuba dived, swum with dolphins, got a tattoo but if I could, I would go to India for a month to study yoga; and I would like to drive from L.A. to New York. I'll have to think about a third. 😊

COMMUNITY WATER STATIONS IN TAWA AND LINDEN

Wellington Water is in the process of establishing at least 22 water stations across the Wellington region. At some sites they are drilling new wells to source water, and at other sites water will be taken from streams. Decisions on the design and location of each new structure are based on availability of water, site accessibility, and landowner preference.

Wellington Water has identified two such sites in Tawa. One is at 16 Lyndhurst Road, the other is alongside the Tawa Valley Pathway – Ara Tawa in the eastern part of Linden Park. "Our work to supply Wellington with water after a significant earthquake has identified a site near the Tawa Fire Station and another site at Linden Park as potential alternative water sources." The pic at right shows the current drilling setup near the fire station.



CHRISTMAS SERVICES IN TAWA

Community Christmas Service hosted by Tawa Baptist and Salvation Army Churches – Tawa College hall 9.30am Christmas Day

St Christopher's Anglican Church

Family Service 6pm Christmas Eve

Carols and Communion 10.30pm Christmas Eve

Family Worship and Communion 10am Christmas Day

Tawa Baptist Church

Carols and Candles Service 8pm Christmas Eve,
preceded by coffee and cake 7.30pm

Our Lady of Fatima Catholic Parish

Family Mass 7pm Christmas Eve

Carols and Midnight Mass 11.30pm Christmas Eve

Christmas Day Mass 10.30am Christmas Day



Tawa Union Church

Christmas Eve Service 11.30pm

Combined Service 9.30am Christmas Day

Tawa New Life Church

Community Service at Tawa College 9.30am
Christmas Day

Tawa Community Centre

A friendly place to pop in during the hours of 9am-1pm on weekdays, or hire a room or hall for your community group / birthday party / meeting at reasonable rates.

Like us on Facebook at: <https://www.facebook.com/TawaAndLindenCommunityCentres> or email mandy.russell@wcc.govt.nz and put 'Join' as the subject to receive regular updates.

Ngā mihi

Malcolm Sparrow

info@tawalink.com 027 232 2320



"Christmas is doing a little something extra for someone." – Charles M Schulz

"There's no happier moment in life than to awake Christmas morning and be a child."

"Christmas is a necessity. There has to be at least one day of the year to remind us that we're here for something else besides ourselves." – Eric Sevareid

"My idea of Christmas, whether old-fashioned or modern, is very simple: loving others. Come to think of it, why do we have to wait for Christmas to do that?" – Bob Hope

This newsletter is emailed monthly to around 1250 Tawa households, businesses, schools, churches and clubs/groups (anyone who has an interest in the community of Tawa).

Some articles in this newsletter have been sent through by members of the Tawa community and have been published 'unedited'. They may not necessarily reflect the views of the Editor.

If you no longer wish to receive the newsletter, please send us an email requesting that your name be deleted from our list.

See www.tawalink.com/newsletters.html for back issues of the newsletter.



Photo (at left) was taken in late November by Gil and Helen Roper.

"The magnificent rata tree at the entrance to Takapu valley. The tree looks stunning – its best flowering for a number of years, and given the danger of myrtle rust (the rata is in the family of trees at risk) we need to enjoy it while we can."



A SUMMARY OF EVENTS IN TAWA IN 2017

(as gleaned from this past year's community newsletters)

2017

* = script has corresponding pic

JANUARY

Weather-wise it's a less-than-memorable month!

FEBRUARY

A Tawa Community Board by-election is won by Liz Langham.

The establishment of a Tawa BID (Business Improvement District) is on track with the announcement that more than 70% of those participating in the poll are in favour.

Around 230 people attend a public meeting organised by the Tawa Community Board to gauge support for 'saving' the Forest of Tane which is up for sale.*



MARCH

55-60 people take part in a "Bike, Scoot or Walk" event along the Tawa Valley Pathway – Ara Tawa from Willowbank Park to Linden Park.*



Around 35 street gatherings – barbecues, afternoon teas or similar – are held in Tawa in connection with Neighbours' Day Aotearoa.



With strong community support, Council acquires for public ownership the 36 hectare Forest of Tane block on the western hills of Tawa.

A fair/gala is run at both Hampton Hill and Greenacres Schools.

APRIL

End-of-season Neighbours' Day community barbecues are held at Tawa Community Garden in Coronation Park and at Wall Park in north Linden.*



Easter Gala at Linden School.

112 folks participate in a community walk in the newly-acquired Forest of Tane.*

Official opening of the new Tawa Memorial alongside Grasslees Reserve.*

Large turnout for the local ANZAC Day parade and service.



MAY

Tawa Orchestra's "Last Night of the Proms" is held in the Salvation Army Hall.

The LUX Light Festival includes a Hampton Hill-built display in Tawa Plaza.*



JUNE

Well-attended Tawa Residents' AGM includes an update on progress with Transmission Gully, especially with regard to its effect on Linden.*

JULY

Dean Tutton, having been with the NZ Fire Service for 27 years, is appointed as Tawa's Chief Fire Officer after Michael Farrand steps down.

The newly-fenced dog exercise area at Taylor Park is officially opened.*

"Thoroughly Modern Millie" runs for a number of nights at Tawa College.



AUGUST

“Nana’s Shed”, a book for younger children written by Marie Munro, and illustrated by Rachel Doragh (both locals), is launched at the Tawa Library.

Tawa plaza’s beautiful cherry trees are moved to a new home in Grasslees Reserve in preparation for the upgrade of Tawa Plaza.*

Linden School Fit Track Opening and Community Fun Day, with Mayor Justin Lester declaring the fit track open.

A “spike in crime” leads to locals organising a community safety meeting in Linden, with Police and Tawa Community Patrol representatives giving advice.*

SEPTEMBER

The mural on the western wall of the Tawa New World supermarket is completed. The artist is Hamilton-based Poi.*

OCTOBER

A new book about Tawa, “Tawa the tree, the community and its reserves”, written by Gil Roper, is launched at the Tawa Library.

Tawa Rotary’s annual book fair, held later than usual, grosses more than \$30,000.

Work starts on the construction of a new roundabout at the intersection of Main Road, Tawa and Surrey Street.

The new Tawa logo is launched.*

Spring into Tawa attracts big crowds on a beautiful spring day.*

200+ children enjoy the annual Tawa Light Party at the New Life Church.

NOVEMBER

The Tawa Borough Scholarship is awarded to Chinmaya Dixit at Tawa College’s end-of-year academic prizegiving.

The Tawa College girls’ cricket team wins a place at the upcoming national finals.

MenzShed Tawa holds its AGM with substantial progress being made on its new quarters in the Rural Fire depot building.

The BNZ in Tawa is closed for good.

The upgrade of the Tawa Pump Track (Bike Park) in Duncan St is completed.*

The Tawa Primary Schools’ Citizenship Awards ceremony is held for the seventh successive year, with the Mayor presenting awards to a winner from each of Tawa’s six primary schools, plus the Intermediate.*

DECEMBER

The Tawa Lions Christmas Parade involves big numbers of participants again.*

The first Tawa Christmas Festival is held at Tawa School after the parade.

Around 250 Year 10 Tawa College students undertake their annual four days of community service in Tawa for the ninth successive year.

Two nights of “Toot for Tucker” see many items collected for Tawa Food Bank.

